

ROCK SCHOOL ARTS FOUNDATION

ARTS ALIVE

VOLUME 13, ISSUE 1



WINTER 2017

Letters from the Chairman & Executive Director



The Old Rock School truly has something for everyone. It began life as a school, constructed of rocks gathered locally by children who were to begin their formal education in it. It continues fulfilling an educational role to this day, through children's art classes, adult workshops, and musical and drama presentations, galleries of local art, and even opera for elementary students.

The Rock School Arts Foundation provides exhibitions of student art from area schools, exhibitions by local professional artists, and the Open Competition each year shows a mix of works by amateur and professional artists.

The Old Rock School is a rare gem in our community and a visit to enjoy the art is a pause from the demands of our busy lives. How can you make the most of these visits? It is extremely important to look at all kinds of art, not only what immediately pleases you. Visit with your family and friends. Sit down and take time to think about each work of art. A work of art will often have a very different meaning to two different people, or to an adult and a child, so talk about it. If you don't like a particular work, at least take the time to consider what the artist is trying to tell you, or why the artist did this piece.

A work of art represents not only what the artist is trying to convey, but also what we bring to it from our background and experience. An artist may express an idea in just a few brush strokes or in very detailed realistic form. In art there is no wrong answer. The Rock School Arts Foundation provides varied exhibitions and events, striving to provide something that will appeal to everyone. We hope that you will enjoy all of them and visit often.

Linda Harvey, Chairman

There is no surer method of evading the world than by following Art, and no surer method of linking oneself to it than by Art.

Johann Wolfgang von Goethe

The Rock School Arts Foundation continues to serve as a cultural resource for our art community and a cultural destination for our many tourists and visitors.

This year with your kind support, we offered many interesting art experiences and opportunities. We began last year with exhibitions of quilling by Beth Oczkowski and oil paintings by Angel Vite. In February, we presented *Perspectives in Portraiture* by Francis Hairfield, Kenny Walker, and Lance Turner. In March, we offered exhibitions by Beth Blake and Catherine Walker, two professors of art at East Carolina University. In summer, Eddie Kent Tallent exhibited local nature scenes in oil and pastel. At the same time, The Brush and Palette Art Club presented an exhibition of diverse visual media. In fall, Beau and Brenda Lyday, reclaimed wood and metal artists, presented a sculpture exhibition in Gallery I. At the same time, Tom and Casey Kilgore exhibited paintings of Malawi African Life in Gallery II. Kathi Yarnall, a superb watercolorist and member of our Board, taught a technique workshop for interested art students. We offered art competitions for the local schools, and many local and regional artists participated in our annual Open Art Competition and People's Choice Award. Fine craftsmen participated in our Holiday Art and Craft Show & Sale in Gallery I, while Priscilla Wallace, Katherine Lee and other artists presented larger 2-dimensional works in Gallery II. Opera Carolina Express performed the children's opera *The Tortoise and The Hare* to local elementary children, and summer art camp was offered to children ages 6 to 14 again this year. We owe these exciting art successes to you - our donors, members, artists, teachers, board members, and volunteers. Because of your support, these successes have served many. Thank you!



Elizabeth Furr, Ex. Director

INSIDE THIS ISSUE:

THE TORTOISE AND THE HARE	2
OPEN ART COMPETITION	2
A LOOK BACK AT 2016	3
THINGS TO COME IN 2017	3
HOW TO GIVE TO THE ENDOWMENT	4
LITERARY CORNER	5
SMALL WORKS TO OWN	5

The Board of Directors for the Rock School Arts Foundation strives to work in partnership with the community to provide quality arts. Your support is making possible programs of art education that enrich our lives as lifetime learners.

HOW NANITA LEARNED TO MAKE FLAN

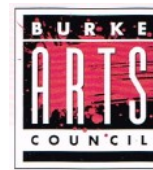


Above are kindergarten students from George Hildebrand Elementary school with their teacher Tina Brittain standing left and Teacher Assistant Miss Watts standing right with members of the cast. Many thanks to the music directors for using the Opera Carolina Express study guide to prepare the students for the performance. The cast shown are Chelsea Obermeier, soprano, the Tortoise, center left; and Zachary Hugo, baritone, the Hare, center right. Not shown is Adam Watson, pianist.

Following our tradition for many years, Opera Carolina came to the Rock School auditorium to perform to more than 900 children and teachers from Valdese, Glen Alpine, and George Hildebrand elementary schools. Singers from Opera Carolina Express performed the children's opera *The Tortoise and the Hare* on Nov. 3rd before excited students. Our less-than-humble Hare has just won another race when the Tortoise speaks up that she wants to join the track team. After he tells her she can't be on the team because she is a *turtle*, our tenacious Tortoise challenges the Hare to a race for a spot on the team. Will sheer speed take the lead or will slow and steady determination win the race? Adapted from Aesop's classic fable and set to the animated music of Rossini, this 35-minute musical telling shared that preparation and determination can overcome many obstacles. This project is made possible in part by a

grant from the Grassroots Arts Program of the N. C. Arts Council, a state agency, by Burke Arts Council, and by the Rock School Arts Foundation. The N.C. Arts Council is a division of the department of Culture Resources, with funding from the National Endowment for the Arts.

A Rock School



www.ncarts.org

2016 OPEN ART COMPETITION

The 29th Annual Open Art Competition opened on August 13th, Waldensian Festival Day, in the Rock School Art Galleries I and II in Valdese. Deborah Squier, whose work is represented at Blue Spiral 1 in Asheville, was the judge. Deborah is the daughter/student of American painter, Donald Gordon Squier, family portraitist of General George S. Patton and Family as well as other public figures in Washington, D.C. She commented, "it was difficult to choose from so many skilled and impactful works." She selected the following for awards and here are her comments. **First Place** was given to *Entanglement*, an oil by Amy McHugh. The painted tree is very organic with strong contrasts accentuated by excellent use of warm and cool colors which allows the eye to rest. It holds together as a strong compositional and emotional impact. Very strong execution of the subject! **Second Place** was given to *Origin*, an acrylic painting by Joey Martin. The elements and design are bold and beautifully rendered with strong color, contrast and conceptual impact. I interpret the foot as symbolic of the human "footprint" with regard to our impact on the web of life. The composition and the elements are thoughtfully chosen to bring the viewer in to ponder the questions being posed. **Third Place** was awarded to *A Mother's Love*, a pencil drawing by Daniel Lane. The vulnerability of the maternal connection is very present in the expression of the mother and child. The handling of the medium is versatile and sensitively applied to carry the mood and feeling of the drawing without being overly sentimental. **Honorable Mention** was given to *Lil' Boots*, a pen and ink by Lisa Dickson. I love this cat! It is expressive and rapt. **Honorable Mention** was awarded to *Deep Purple Dream*, a watercolor on handmade paper by Vaun Healey. This floral is alive and well! It is a good example of loose, painterly expression using more neutral complements. **Honorable Mention** was awarded to *The Purple Blanket*, a transparent watercolor by Victoria Bauer. This painting is beautifully nuanced in watercolor washes. The color harmonies reinforce the more pale flesh tones creating a luminous harmony. **Honorable Mention** was given to *Guardian of the Forest*, a watercolor by RLB Hartman. I feel the gestalt of this tree as the subject grows out of its habitat. The watercolor is very competently controlled and the marks on the tree trunk are signature to the character of the bark and the looser surrounding habitat is a lush counterbalance. **Honorable Mention** was awarded to *Forest of Gold*, a watercolor by Meredith Janssen. The foreground trees summon the viewer to enter the scene. The golds and ochres are warm and pull you along the light filled path within the dense forest. Very harmonious handling of diverse elements. **Honorable Mention** was awarded to *Winter Solace II*, an oil painting by Mary Jones Wiley. The texture and the warm and cool local color represent the winter tones and sensory experience of a real time and place. **Honorable Mention** was awarded to *Quiet Mountain Water*, an oil painting by Mary Morris. I am drawn to the luminosity in this painting and the open space within the canopy. The diverse elements surrounding the stream also make it visually interesting and satisfying. **Honorable Mention** was awarded to *The Field*, an oil painting by Sandra Reed Froedge. The high horizon line and overall focal point with the scattered structures engage the viewer. The foreground expanse makes a lovely entry to the landscape. **Honorable Mention** was awarded to *Broyhill Park I*, an oil painting on paper by Amy McHugh. This intimate look into a natural stream bordered by lush vegetation is both serene and active. The artist has provided both mystery and familiarity with skillfully woven warm and cool washes of subtle color. **Honorable Mention** was awarded to *The Musician*, an oil on canvas by Sandra Reed Froedge. This is a strong and compelling figurative work. There is a palpable force to the painting and the persona of the subject. **Honorable Mention** was awarded to *Magnificent Morning*, a watercolor painting by Toni Indicott. This is a "transcendent landscape." The watercolor washes convey both atmosphere and mood, fleeting and luminous. Waldensian Festival goers enjoyed voting for the People's Choice Award after visiting both galleries. The painting that won the most votes was an acrylic painting entitled *Wildlife Sunset* by Morgan Bollinger.



1st Prize - Amy McHugh



2nd Prize - Joey Martin



3rd Prize - Daniel Lane



People's Choice - Morgan Bollinger

Rock School Arts Foundation would like to thank all participating artists; Deborah Squier, judge; primary sponsors McDonald's, Bimbo Bakeries USA, Heritage Funeral Service & Crematory, Drexel Discount Drug, Cannon Pharmacy & Rock Drug Store; and supporter, Brinkley Insurance.



LITERARY CORNER—WORDS FROM OUR TALENTED AND ACCOMPLISHED BOARD

Former Board member and author Joan L. Cannon created this poem entitled “Brown”...

Brown is withered
leaves on the fallow earth
that shelter the warm dard
to keep the worm warm
& all that cluster near him.
Brown is the eyes of my beloved,
dark & steady,
flame & balm in their glance;
It's the tan on the hand
that touches mine.
Brown is the old,
the city & knowledge,
the ripeness of pears,
of parchment & life
lived long.
The perfume of wood,
the grain of the board
that groans with the weight of our feast.
Brown is the earth,
the planks of our floor,
the dark of our hearth
when the flames have burned down
& the shadows draw round
& darken the days as they
shorten to winter & cold.
Brown is the cider, crisp on the tongue,
savor of harvest & essence of home.

In 2015 Board Member Emeritus Betty Garrou wrote “A Children’s Book for Them to Give to Their Parents” and this poem is from her book...

The old lady and her son lived on a hill
She stayed home and he worked in a mill
Too far for him to walk, a motorcycle would do
She didn’t cook, sew or sweep the floor
She sat in her rocking chair by the door
And spent her days singing old songs,
Her son got his guitar when he came in
They played and sang til a quarter to ten
They were so loud they could be heard
Down in the valley and all over the town
People would sit on their porch swing
rocking up and down
The two became known all over the county
Then Nashville called and
You can be sure that everywhere they went
She brought her rocking chair
And didn’t cook or sew or sweep the floor

SMALL WORKS TO OWN

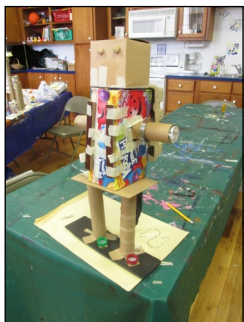
Fine craftsmen participating in our 2016-2017 Holiday Show and Sale were members of the Uni4Artists group. Crafts included glass, crocheted pottery, jewelry, enameling, hand painted silk scarves, hand made soap, and small original works in oil, water-color, acrylic and silk, as well as larger 2-dimensional works.



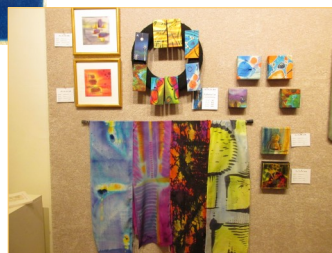
Enameling by
Janet Burgess



Glass by Tina Stewart



Hand painted silk scarves
and small works by
Katherine Lee



Art 101 and Summer Art Camp were offered to students ages 6 to 14 and taught by Heidi Thompson again this year. Heidi has experience teaching and facilitating art projects for Signature Studio XI, FIPP, and several Burke County schools. She is also a multimedia artist and graphic illustrator. Students worked in various media to learn about color, texture, and shapes and studied basic principals of drawing.

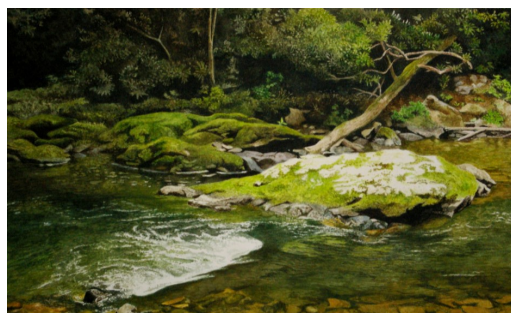


A LOOK BACK AT 2016



Professors Catherine Walker and Beth Blake

~exhibited solo exhibitions of drawings and mixed media. Catherine is particularly interested in creating work in a series that develops visually and conceptually over a period of time; months to years. About memory and human communication in all of its quirkiness, appeal and cruelty, the combined text and imagery result in a visual diary or journal that may be viewed as individual pieces or in groups of several works creating a narrative. Beth states, "My work is informed by my day-to-day activities, my environment, social questions I continue to ask, and (most frequently) my role as a parent."



Eddie Kent Tallent~Eddie Kent Tallent attended the Governor's School of North Carolina for the Gifted and Talented, and earned his BFA with honors in fine arts/painting from the Ringling College of Art and Design in Sarasota, Florida. After graduating, he began a career in higher education administration serving as assistant director of admissions at Ringling, assistant dean of student affairs at the College for Creative Studies in Detroit, Michigan, and most recently as assistant dean and executive director of admissions at George Mason University in Fairfax, Virginia where he was instrumental in assisting Mason's School of Art gain accreditation by the National Association of Schools of Art and Design and served on the advisory boards for the university's Honors College and the College of Visual and Performing Arts.

The Brush and Palette Art Club~

Brush and Palette Art Club, founded in 1975, is an organization of 30 dedicated artists. Over the years, through continuing education, workshops and shared techniques, it has evolved into a club whose members are actively drawing, painting, sculpting, potting, and exhibiting both individually and as a group.



Tom and Casey Kilgore~Tom and Casey Kilgore of CK Paints are artists who create, design and paint wall and canvas murals. Their custom hand painted murals appear in homes, churches, schools, hospitals and retail businesses throughout North Carolina and the mid-Atlantic region.



Brenda and Beau Lyday~Beau works in old wood and old metal. His work is created from a historical, ornamental, and architectural background influenced by the motifs, proportions, ratios and period styles from the past. Brenda has always been a huge fan of the photos taken by the Farm Security Administration during the depression because the emotion is so raw. As a collector of vintage photos, she paints that same form of expression from the photographs—weariness, worry, dreams not quite fulfilled, and aches and pains.



THINGS TO COME IN 2017—RSAF EXHIBIT GUIDE

- Feb. 6 - March 3, 2017.....Loretta Clark High Schools Exhibition/Competition
- Mar. 12 - April 21.....Amy McHugh, Don McHugh
- May 1 - May 26.....Local Schools Exposition/Competition
- June 5 - July 21Toni Indicott, Andrea Watson
- Aug. 12 - Sept. 22.....Open Art Competition & People's Choice Award
- October 1 - Nov. 10.....Joey Martin, Meredith Janssen
- Nov. 26 - Jan. 2018.....Holiday Art & Fine Craft Sale

"If you truly love Nature, you will find beauty everywhere" Vincent Van Gogh



ROCK SCHOOL ARTS FOUNDATION ENDOWMENT FUND

What Is An Endowment?

An endowment is a permanent fund established by an individual, group, or organization to provide a secondary source of income for a charitable purpose or nonprofit organization. Gifts to the endowment are invested, and a percentage of the fund is distributed to the recipient organization, in this case, the Rock School Arts Foundation. All excess earnings are added back to the endowment, so gifts will make an impact now – and forever.

What Will My Endowment Gift Support?

Rock School Arts receives quarterly grants from the Endowment Fund. An unrestricted gift will support all the programs and projects of the Rock School Arts Foundation.

How Do I Make A Gift To The RSAF Endowment Fund?

The RSAF Endowment Fund is established with the Community Foundation of Burke County. Gifts to the endowment should be made payable to the Community Foundation of Burke County (CFBC) with a memo indicating that the gift is for the RSAF Endowment Fund. If you have any questions, please contact the CFBC at (828) 437-7105 or go by and visit at 205 North King Street, Morganton. Checks may be sent to the Community Foundation of Burke County, P.O. Box 1156, Morganton, NC 28680.

The Valdese Public Art Commission continues to seek donations for Public Art for Valdese. The method for giving is the "Roundup Program for Public Art" in which residents can "roundup" their water bills to the nearest dollar to contribute to the Public Art Commission Fund. The Fund will build in coming years to provide for promenades, sculptures, murals, historical monuments, and garden spots. This effort is in keeping with the vision of Valdese as a walking village with visual interests downtown and along side streets. The fund will continue to build slowly until the local economy begins to recover, and selection of a new project will be possible.



Three Graces by Carl Billingsley

2016 BOARD OF DIRECTORS

Linda Harvey, Chairman

Kathi Yarnall, Vice-Chairman

Kristina Anthony, Secretary

Loretta Clark, Treasurer

Kristina Anthony, Publicity Committee, Rutherford College, NC

Beth Bailey, Education Committee, Morganton, NC

Loretta Clark, Education Committee, Valdese, NC

Gretchen Lane-Costner, Publicity Committee, Valdese, NC

Alan Griffin, Publicity Committee, Valdese, NC

Linda Harvey, Selection Committee, Valdese, NC

Barbie Heilman, Publicity Committee, Valdese, NC

Ann Mullis, Reception Committee, Valdese, NC

Kim Ollis, Education Committee, Morganton, NC

Bryan Propst, Selection Committee, Morganton, NC

Leslie Edwards Rostan, Performing Arts Committee, Valdese, NC

Debbie Thompson, Performing Arts Committee, Valdese, NC

Connie Tosky, Open Art Comp/Selection Committees, Morganton, NC

Kathi Yarnall, Education/Selection Committee, Morganton, NC

Elizabeth Furr, Executive Director, Valdese, NC

Liaisons to the Art Community—

Betty Garrou, Jackie Deaton, Ellen Schwarzbek,

Deborah Squier, Lucy Folger, John Garrou, Mark Poteat

CONTRIBUTE TO PUBLIC ART...

Send donations to the Valdese Public Art Commission Fund
PO Box 339, Valdese, NC 28690

REGIONAL ARTISTS PROJECT

Rock School Arts Foundation participated in the annual meeting for the Regional Artists Project Grant allocation process. Grants were awarded in visual arts, crafts, and music to artists from Burke, Catawba and Caldwell counties. The total grant amount was \$7500 which was divided among recipients with projects that advanced their artistic level. Recipients were Teena Stewart, Richard Wright, Courtney Long, Dan Smith, Zan Thompson, Justin Butler, Nathan Hefner, and Bob Sinclair. Regional Arts Councils and RSAF, with matching funds from the NC Arts Council, provided the funds for these grants.

Our Mission

The Rock School Arts Foundation offers new and enriching exhibitions, programs, and art education for adults and children; serves as a cultural destination for tourists and visitors; and is a resource for our local art communities.

Artist Receptions
Student Art Projects
Fine Art & Craft Exhibitions

Regional Artist Project Grant Sponsor
NC Arts Council Member
Open Art Competition

Studio 101 Art Classes
Community Art Projects
Burke Arts Council Member



Rock School Arts Foundation

ARTS ALIVE

Phone: 828-879-2129
PO Box 837, Valdese, NC 28690
www.visitvaldese.com

BULK RATE
POSTAGE PAID
NON-PROFIT ORG.
VALDESE, NC 28690
PERMIT No. 41

Return Service Requested

ROCK SCHOOL ARTS FOUNDATION—OUR SUPPORTING MEMBERS

Individual

Kristina Anthony
Stephanie Baker
Kathryn Barber
Patricia Bottenfield
Betty Brendle
Lib Caruso
Emma Draughn
Sandra Reed Froedge
Helen Gibbs
Mr. & Mrs. Glenn Hardison
Commodore George Horak
Rachel Keisler
Shirley Lee
Mary Morris
Rheta Robinson
Judy Rider
Ellen Schwarzbek
Dianne Searcy
Tommy Stine
Kenny Walker
Mildred Wallis

Sandy West
Mary Jones Wiley
Jo Ann Wilfong
Phyllis Wogan
Kathi Yarnall

Family

Frances Barlowe
Cdr. and Mrs. Ed Bleynat
Jewell Bounous
Dr. and Mrs. Ed Bujold
Mr. and Mrs. Bruce Cannon
Joan Cannon
Emily Church
Mr. and Mrs. Charles Clark
Warren Dennis
Mr. and Mrs. Bill Gaillard
Meredith Janssen
Mr. and Mrs. Tom Kilgore
Mr. and Mrs. Cor M. Kardol
Dr. and Mrs. Robert Stevenson
Mr. & Mrs. Richard Whisenant

Sponsor

Rep. and Mrs. High Blackwell
Winifred Boyd
Mr. and Mrs. Gary Delp
Mr. and Mrs. Marvin Folger
Sharon Jacumin
Pat Turner Mitchell
Rosalba Shook

Patron

Mr. and Mrs. John Black
Mr. & Mrs. Loy Ray Burris
Jean Dalmas
Dr. and Mrs. C.W. Ellison
Dorothy Ervin
Mr. and Mrs. Louis Garrou
Mr. and Mrs. Emile Jacumin
Mr. and Mrs. Steve Mullis
Colonel William Lea Palmer
Dr. and Mrs. J. Iverson Riddle
Mr. and Mrs. Mark Rostan
Naomi Rostan

Dr. and Mrs. Aaron Tosky
Valdese High School
Class of 1945

Sustainer

Michael Alexander
Francis Hairfield
Mr. and Mrs. Glenn Harvey
Senator & Mrs. Jim Jacumin

Benefactor

Dr. and Mrs. Paul Deaton
Laura Levinson
Mr. and Mrs. James Rostan
Mr. & Mrs. John P. Rostan, III
Anonymous

Corporate

Bimbo Bakeries USA
Brinkley Insurance Agency
Cannon Pharmacy
Drexel Discount Drug Store
Heritage Funeral Service and
Crematory

IBM Corporation
McDonald's Corporation
Rock Drug Store

Grants

Burke Arts Council
The Community Foundation of
Burke County
Donald Jackson and Maxine
Cooper McCall Fund
of CFBC
Morgan-Avery Fund of CFBC
NC Arts Council
The Rostan Family Foundation
The Town of Valdese

Endowment Contributors

Dr. and Mrs. Paul Deaton
The Rostan Family Foundation
Dr. and Mrs. John Sherrill

We apologize if we have missed listing any new members. New members not listed will be added to the next edition of Arts Alive.

Membership Rates

Individual	\$20
Family	\$35
Sponsor	\$50
Patron	\$100
Sustainer	\$250
Benefactor	\$500 & up

☐ Yes, I would like to become an RSAF member.
☐ Yes, I would like to contribute \$ _____ to the Rock School Arts Endowment Fund
Please provide the following information and return your contribution to:
ROCK SCHOOL ARTS FOUNDATION, P.O. Box 837, Valdese, NC 28690.
NAME: _____
ADDRESS: _____
CITY / STATE / ZIP _____
PHONE: _____
EMAIL: _____
MEMBERSHIP TYPE: _____

VISIT OUR WEB PAGE @ WWW.VISITVALDESE.COM